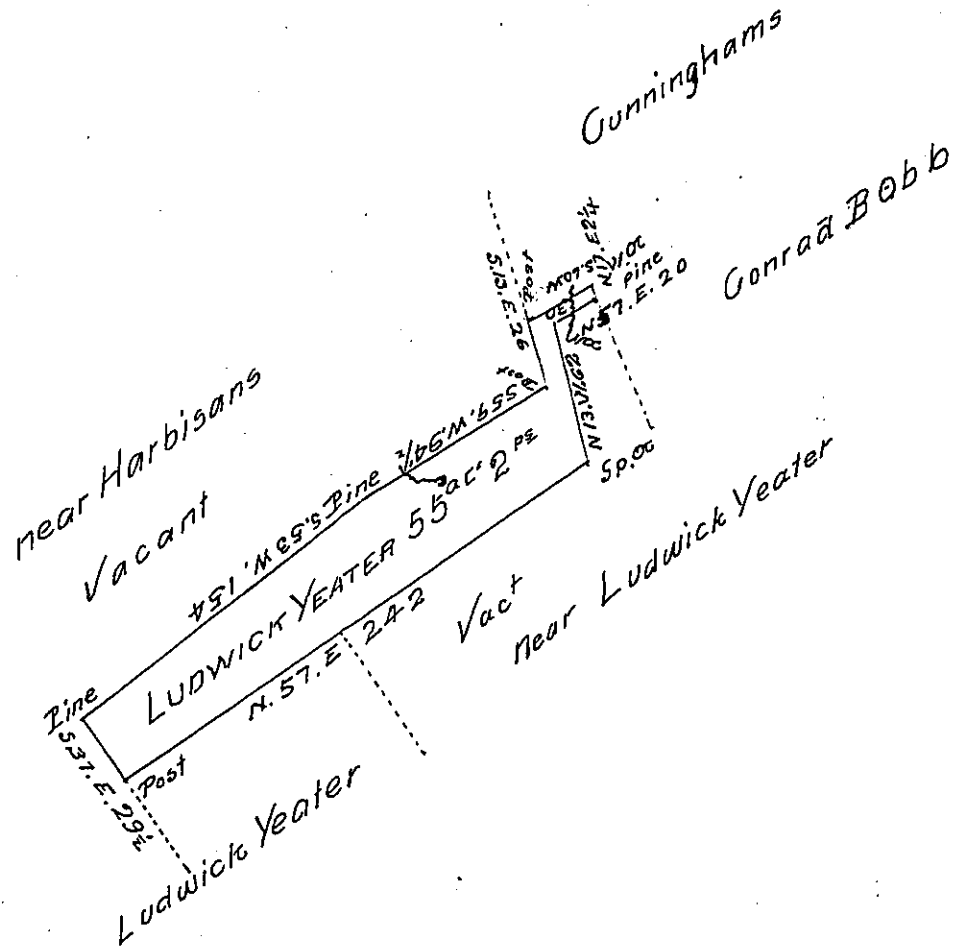


Cours- & Dist. from Sp. Oc

N	13	W	62	WOC
N	57	E	20	Pine
N	17	E	2 1/2	WOC
S	60	W	30	Post
S	13	E	26	Post
S	59	W	94	Pine
S	53	W	154	Pine
S	37	E	29 1/2	Post
N	57	E	242	Sp. Oc.



*A draught of a Tract of Land situate in Derry Township Mifflin County containing Fifty five acres & two perches and the allowance of Six pt Cent for Roads &c.*

*Surveyed for Ludwick Yeater October the 1<sup>st</sup> 1794 in persuance of a Warrant dated the 20<sup>th</sup> of May 1794*

*James Harris D.S.*

*To Daniel Brodhead Esq<sup>r</sup>*

*Surv<sup>r</sup> Gen<sup>l</sup> of Pennsylvania*

*IN TESTIMONY that the above is a copy of the original remaining on file in the Department of Internal Affairs of Pennsylvania, made conformably to an Act of Assembly approved the 16th day of February 1833, I have hereunto set my hand and caused the Seal of said Department to be affixed at Harrisburg, this thirteenth day of August 1907*

*Henry Howell*

*Secretary of Internal Affairs.*